

Kabar INKLUSI



INKLUSI PROGRAM NEWSLETTER

6th Edition / April - June 2025

NO-ONE IS LEFT BEHIND *Tidak Ada Satupun yang Tertinggal*

Australian Ambassador and Deputy Minister Visit Sekolah Perempuan in Bali, Reinforce Commitment to Gender Equality and Inclusive Development



The Australian Ambassador to Indonesia, Rod Brazier, and Indonesia's Deputy Minister for Women's Empowerment and Child Protection, Veronica Tan, visited the Sekolah Perempuan in Dauh Puri Kaja Village, Denpasar, Bali, in May 2025. Facilitated by Bali Sruti, a local partner of KAPAL Perempuan, the visit underscored the strong and ongoing partnership between the Governments of Australia and Indonesia in advancing gender equality and women's empowerment, particularly at the grassroots level, through multi-stakeholder collaboration.

Click or scan for full article | s.id/SekolahPerempuanBaliVisit

A Roadmap for Adat Communities: A Collaborative Effort Towards Inclusive and Equitable Policy



KEMITRAAN, together with the Directorate of Religion, Education, and Culture at Bappenas RI, kicked off the Preparation of the Roadmap for the Fulfilment of the Rights, Protection, and Empowerment of Adat Communities (MHA) in June 2025 in Jakarta. This event marked a key step towards inclusive and participatory policies that guarantee the constitutional rights of Adat communities. The roadmap aims to strengthen cross-sectoral synergy, accelerate the enactment of the Draft Law on Adat Communities (RUU MHA), and serve as a strategic framework supporting the 2025–2045 National Long-Term Development Plan (RPJPN), particularly the agenda of 'Religious Harmony and Advanced Culture' (*Beragama Maslahat dan Berkebudayaan Maju*).

Click or scan for full article | s.id/AdatCommunitiesRoadmap

Thematic Musrenbang on GEDSI in NTB Amplifies the Voices of Marginalised Groups in Development Planning



During the NTB Provincial Regular Musrenbang in June 2025, INKLUSI partners successfully advocated for the inclusion of Gender Equality, Disability, and Social Inclusion (GEDSI) mainstreaming into the 2026 Regional Medium-Term Development Plan (RPJMD) and the Regional Government Work Plan (RKPD) of West Nusa Tenggara (NTB) Province. This effort was part of the collaboration between the Australian Partnership Program-Synergies and Collaboration for Basic Service Delivery Acceleration (SKALA) Program, in supporting the implementation of the GEDSI Thematic Musrenbang in NTB. It aims to promote the integration of GEDSI issues into regional policies and ensure the meaningful participation of marginalised groups in achieving more inclusive development planning.

Click or scan for full article | s.id/NTB-GEDSIMusrenbang

Australian Chargé d'Affaires Visits Hunuth Village, Strengthening Collaboration for Inclusive Development



The Australian Chargé d'Affaires to Indonesia, Ms Gita Kamath, visited Hunuth Village in Teluk Ambon Subdistrict, Ambon City, Maluku Province, in April 2025. The visit showcased strong multi-stakeholder collaboration to advance inclusive development at the village level, supported by the INKLUSI program. Hunuth is one of the inclusive village models promoted by Rumah Generasi, a local partner of Yayasan BaKTI. The visit reaffirmed a shared commitment to fostering inclusive communities through cross-sector partnerships. The collaboration in Hunuth illustrates how joint efforts between local government and civil society can generate practical, community-driven solutions for greater inclusion.

Click or scan for full article | s.id/AUSChargeVisitsAmbon

Launch of the 6th Temu Inklusi in Cirebon: Reinforcing National Commitment to Inclusive Development



The 6th Temu Inklusi kicked off with a soft launch at the Cirebon Regent's Pavilion in May 2025, under the theme "Commitment, Synergy, Action, and Innovation Based on Diversity for a Golden Indonesia 2045." This soft launch marked the start of a series of activities leading up to the main event, scheduled for 2–4 September 2025 in Durajaya Village, Greged Subdistrict, Cirebon Regency. This biennial national forum, initiated by INKLUSI Partner SIGAB Indonesia, is supported by the disability community, civil society organisations, development partners, and government stakeholders. It serves as a vital platform for sharing, networking, and strengthening the disability rights movement.

Click or scan for full article | s.id/CirebonTemuInklusi

INKLUSI and DANA Collaborate to Support Women-led MSMEs and Entrepreneurs with Disabilities through SisBerdaya and DisBerdaya



The Australia-Indonesia Partnership Towards an Inclusive Society (INKLUSI) is partnering with PT Espay Debit Indonesia Koe (DANA) and Ant International to support economic empowerment initiatives targeting women-led micro, small, and medium enterprises (MSMEs), as well as entrepreneurs with disabilities from INKLUSI's national and local partner networks. This collaboration is being implemented through the SisBerdaya and DisBerdaya programs. By promoting the use of technology to drive sustainable small business development, the partnership aligns with INKLUSI's commitment to economic recovery and strengthening livelihoods among marginalised communities.

Click or scan for full article | s.id/SisBerdayaDisBerdaya-EN

Technical Working Groups Strengthen Australia-Indonesia Collaboration Towards an Inclusive Society



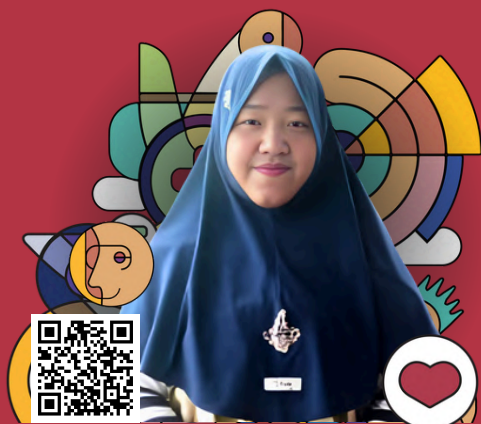
The INKLUSI Program convened the regular Technical Working Group (TWG) meeting in collaboration with the Ministry of National Development Planning (Bappenas) and other relevant ministries and government institutions in May 2025 in Jakarta. The meeting served as a strategic platform to strengthen cross-sectoral collaboration, ensure alignment between program implementation and national policy directions, and prepare for the second phase of the INKLUSI Program (2026–2029). Through this forum, INKLUSI aims to foster inclusive dialogue and a shared commitment among government actors, civil society organisations, development partners, and other stakeholders engaged in the program.

Click or scan for full article | s.id/INKLUSI-TWG

KARTINI'S SPIRIT FOR CHANGE #KARTINIDAY2025

Norkhalisa Empowers Her Community to Tackle Stunting

STORIES



"We want the children in this village to grow up healthy and have a better future. Hopefully, our proposal will be fully implemented so they so they receive the care and health check-ups they truly deserve." - Norkhalisa

Norkhalisa plays a crucial role in development and policymaking in her village in South Kalimantan. With support from 'Aisyiyah through the INKLUSI Program, she courageously advocated for better healthcare services for children affected by stunting. Her advocacy prompted the village government to allocate a dedicated budget for child health check-ups.

Click or scan for full article | s.id/CeritaNorkhalisa-EN

Fitri and the Women's School for Youth on Sabutung Island

"Sekolah Perempuan Muda empowered me to understand myself, speak out for my rights, and challenge discrimination. I believe young women in Pulau Sabutung have the power to rise, claim their rights, and drive the change towards a fairer, more equal society," - Fitri.

Fitri, a young woman from Sabutung Island, South Sulawesi, initiated the Young Women's School as a space for learning and empowerment for young women in her community. With support from KAPAL Perempuan and the Yayasan Kajian dan Pembangunan Masyarakat (YKPM), Fitri and her peers have been able to strengthen their understanding of gender equality, women's rights, and leadership.



Click or scan for full article | s.id/CeritaFitri-EN

Suhartini Champions SRHR and Economic Empowerment in a Bengkulu Village



"The support from PERMAMPU and the training I received gave me the confidence to believe that every woman in the village has the right to be heard and to actively contribute to development." - Suhartini

Suhartini has become a beacon of hope for women in her village in Bengkulu. Through her courageous advocacy for women's rights, she persuaded the village government to allocate funding for Sexual and Reproductive Health and Rights (SRHR) education. In addition, she initiated the formation of a study group and a savings and loan cooperative, Harapan Perempuan ("Women's Hope"), providing women in the village with new opportunities to achieve economic independence.

Click or scan for full article | s.id/CeritaSuhartini-EN

PUSKAPA UI – Social Care for Children in Vulnerable Households in Indonesia: Understanding Child Social Care Practices in Migrant Worker Families and Informal Worker Families

The study was prepared and published by the Centre on Child Protection and Wellbeing at the University of Indonesia (PUSKAPA UI), as a research partner, in collaboration with Migrant CARE and PEKKA as civil society organisation (CSO) partners of INKLUSI. It aims to advance policies and foster multi-stakeholder collaboration to ensure inclusive social care rights for vulnerable groups, particularly children in at-risk families in rural areas of Indonesia.



Scan or click to read more |
s.id/PUSKAPAU-SocialCare

SIGAB Indonesia – A Practical Guide to Mainstreaming Disability Inclusion in the Formulation of Regional Medium-Term Development Plans (RPJMD)

This guide was developed by Sasana Inklusi dan Gerakan Advokasi Difabel (SIGAB Indonesia) to provide a practical understanding of the Regional Medium-Term Development Plan (RPJMD), and to encourage the active and collaborative participation of Organisations of Persons with Disabilities (OPDis) and CSOs in ensuring the mainstreaming of disability issues in the planning, implementation, and monitoring of more inclusive local development, particularly for persons with disabilities.



Scan or click to read more |
s.id/RPJMDInklusifDifabel_EN
(Only available in Bahasa Indonesia)

Yayasan BaKTI – Story of Change Video Towards Inclusive Villages in Kupang Regency

This story of change video highlights the initiative of the BaKTI Foundation, in collaboration with its local partner Ume Daya Nusantara (UDN), in advocating for the establishment of a Village Regulation (Perdes) on Inclusive Villages in Kupang District. Using a participatory approach and strengthening village capacities, the process engaged Village Monitoring Groups (Kelompok Pemerhati Desa/KPD), persons with disabilities, and other vulnerable groups to ensure that village policies reflect the aspirations of all residents. This initiative also served as a foundation for the development of more inclusive, just, and pro-marginalised regulations.



Scan or click to watch:
s.id/BaKTI-DesaInklusif
(Only available in Bahasa Indonesia)

KEMITRAAN – Ngobrol Inklusif Podcast “Time for Young Voices to Lead the Change”

Ngobrol Inklusif is a podcast initiated by KEMITRAAN, an INKLUSI Partner, offering a platform for dialogue on issues of equality, diversity, and social inclusion. In this third episode, Dely F. Winki, a young Adat Dayak activist, shares her experiences in navigating the challenges faced by younger generations—overcoming structural barriers, accessing decision-making spaces, and exploring what it means to “take part” in a system that doesn’t always welcome young voices.



Scan or click to watch:
s.id/PodcastNgobrolInklusif
(Only available in Bahasa Indonesia)

NO-ONE IS LEFT BEHIND

Tidak Ada Satu pun yang Tertinggal

The Australia-Indonesia Partnership Towards an Inclusive Society, or INKLUSI, is working to increase the participation of marginalised groups in, and their benefit from, Indonesia’s socio-cultural, economic and political development. INKLUSI works with government and civil society partners to advance their work in gender equality, the rights of persons with disabilities and social inclusion. INKLUSI supports the Government of Indonesia’s agenda for inclusion, including through national development plans and the Sustainable Development Goals. INKLUSI is an 8-year (2021-2029) bilateral Australian and Indonesian Government program with a budget of up to AUD 120 million. It is partnering with 11 Indonesian civil society organisations, 8 research partner institutions and their networks across 33 provinces, >120 district/cities, >800 villages in Indonesia.

INKLUSI

Australia-Indonesia Partnership
Towards an Inclusive Society

