



INKLUSI – The Australia-Indonesia Partnership Towards an Inclusive Society *LEAVE NO ONE BEHIND*



The Australia-Indonesia Partnership Towards an Inclusive Society, or INKLUSI, is an eight-year partnership between the Government of Indonesia and the Government of Australia, running from 2021 to 2029, with a total budget of up to AUD 120 million.



INKLUSI supports the participation of marginalised groups in Indonesia's social, economic, and political development, and helps ensure they benefit more equitably from development outcomes.



INKLUSI works with government and civil society organisations to advance gender equality, the rights of persons with disabilities, and social inclusion. The program contributes to Indonesia's national development agenda and the Sustainable Development Goals.

REACHING MARGINALISED COMMUNITIES ACROSS INDONESIA



32
PROVINCES

MORE THAN
100
DISTRICTS/
CITIES

MORE THAN
600
VILLAGES

GOAL

Leave no one behind: more marginalised people participate in, and benefit from, decisions about Indonesia's sociocultural, economic, and political development.

OBJECTIVE

To strengthen civil society contributions, in partnership with government, to advance gender equality, fulfil the rights of persons with disabilities, and promote social inclusion for marginalised communities.

PILLARS



PRIORITIES

INKLUSI works in partnership with civil society organisations and government to strengthen the participation of marginalised groups in development processes and decisions that affect their lives. In particular, INKLUSI focuses on four key priorities:

Access to Basic Services



Strengthening inclusive access to basic services for marginalised groups through adaptive social protection, improved disability services, enhanced elderly care, and more inclusive health and education systems.

Protection from Violence



Strengthening protection from violence by promoting the fulfilment and protection of the rights of women, children, and vulnerable groups, including efforts to prevent and respond to child marriage and violence against children in a more integrated and responsive manner.

Economic Recovery and Livelihoods



Advancing inclusive economic recovery and livelihoods by optimising the role of Employment ULDs (Disability Service Units), improving policies and governance for inclusive employment, expanding economic access for vulnerable groups, and supporting cooperatives and economic institutions.

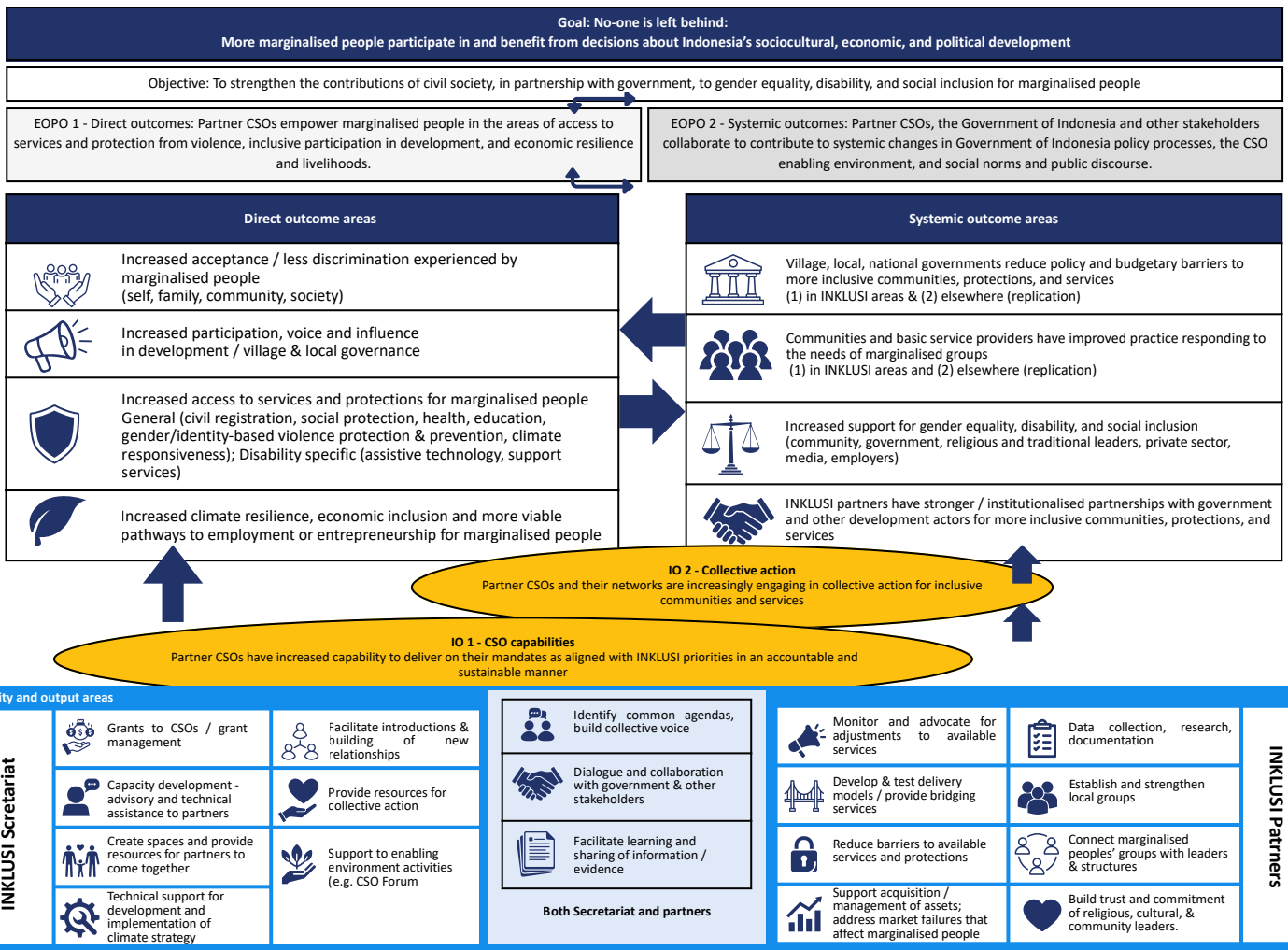
Inclusive Participation in Development



Promoting inclusive participation in development by improving inclusive governance, strengthening policy advocacy and planning at national and subnational levels, advancing inclusive practices at the village level, and ensuring the protection and meaningful participation of vulnerable groups.

ENSURING NO ONE IS LEFT BEHIND

INKLUSI translates the principle of leaving no one behind into collaboration between government, civil society organisations, and communities. This approach recognises marginalised groups not only as beneficiaries, but also as people with voice, lived experience, and knowledge that can shape more inclusive development.



HOW WE WORK

INKLUSI strengthens the ability of civil society partners and their local networks to bring grassroots knowledge into decision-making at subnational and national levels. Civil society organisations play a vital role in reaching marginalised groups and understanding barriers to inclusion. Through flexible grants and technical support, INKLUSI partners undertake activities such as:



Form community groups and community organising



Pilot models to reach marginalised communities



Provide training in empowerment and leadership training



Provide complaint handling and referral services



Collect data on excluded citizens



Advocate to government service providers to address gaps in service delivery

INKLUSI partners use their experience and knowledge to support collective action and advocacy at the national level. With INKLUSI's support, they convene strategic dialogues and collaborate with government, parliament, business, and the private sector. INKLUSI also strengthens partner capacity in gender equality, disability and social inclusion, grants management, monitoring and evaluation, advocacy, communications and social change campaigns, economic empowerment, and organisational sustainability.

INKLUSI PARTNERS ARE SUPPORTING NATIONAL AND SUBNATIONAL POLICY

▶ GEDSI Integration and Strengthening Development Policy

INKLUSI partners advance the integration of GEDSI into Indonesia's development plans, including RPJMN, RPJMD, and RKPd, through the National Women's Congress, data and technical inputs, inclusive musrenbang processes, and the development of nine GEDSI policy priorities for the RPJPN 2025–2045.

▶ Social Inclusion and Basic Services (Disability, Health, Elderly Care)

INKLUSI partners promote disability inclusion across education, health, economic, and political sectors through contributions to national and subnational action plans, including RAN/RAD PD, inclusive village indicators, and inclusive education methodologies. These efforts are reinforced through inclusive health service models, including SRHR and health clinic SOPs, as well as integrated elderly care services.

▶ Protection of Vulnerable Groups (Women, Children, and Survivors of Violence)

INKLUSI partners support the National Strategy on the Prevention of Child Marriage through data, policy engagement, and service delivery. They also advance the implementation of the Law on Sexual Violence Crimes through strengthened service providers, campus task forces, child-friendly pesantren initiatives, and improved care within LPKA. Partners have also developed women's empowerment models adopted in national policy and the Women and Child-Friendly Village framework.

▶ Protection of Migrant Workers and Counter-Trafficking Efforts

INKLUSI partners advance migrant worker protection through global advocacy, regulatory recommendations, technical support for pre-departure training, and contributions to the revision of the anti-trafficking law.

▶ Inclusive Democracy and Adat Peoples' Rights

INKLUSI partners promote inclusive elections through disability-inclusive monitoring tools and inputs to Bawaslu, while also supporting the development of a national roadmap on Indigenous Peoples in collaboration with the Government.

▶ Strengthening Civil Society Ecosystems

INKLUSI supports initiatives that ensure a space for CSO voice and participation in Indonesia's development.

INKLUSI PARTNERS



LEAVE NO ONE BEHIND

Tidak Ada Satupun yang Tertinggal

INKLUSI
Australia - Indonesia Partnership
Towards an Inclusive Society

The Australia-Indonesia Partnership Towards an Inclusive Society, or INKLUSI, is working to increase the participation of marginalised groups in, and their benefit from, Indonesia's socio-cultural, economic and political development. INKLUSI works with government and civil society partners to advance gender equality, the fulfilment of the rights of persons with disabilities, and social inclusion. The program supports the Government of Indonesia's agenda to realise an inclusive society, in line with national development plans and the Sustainable Development Goals. INKLUSI is an eight-year partnership program between the Government of Indonesia and the Government of Australia (2021–2029), with a budget of up to AUD 120 million. In Phase 2 (2026–2029), the program partners with 10 Indonesian civil society organisations and their networks across 32 provinces, >100 districts/cities, and >600 villages in Indonesia.

CONTACT

✉ info@inklusi.or.id

🌐 www.inklusi.or.id

