



## **INKLUSI – The Australia-Indonesia Partnership Towards an Inclusive Society** *No-one is Left Behind*

The Australia-Indonesia Partnership Towards an Inclusive Society, or INKLUSI, is working to increase the participation of marginalised groups in, and their benefit from, Indonesia's socio-cultural, economic and political development. INKLUSI works with government and civil society partners to advance their work in gender equality, the rights of persons with disabilities and social inclusion.

INKLUSI supports the Government of Indonesia's agenda for inclusion, including through national development priorities and the Sustainable Development Goals .

INKLUSI is an 8-year (2021-2029) bilateral Australian and Indonesian Government program with a budget of up to AUD 120 million. It is partnering with 11 Indonesian civil society organisations, 8 research partner institutions and their networks.

## **REACHING MARGINALISED COMMUNITIES ACROSS INDONESIA**



**33**

PROVINCES

MORE THAN

**120**

DISTRICTS/  
CITIES

MORE THAN

**800**

VILLAGES

## KEY PRIORITIES

INKLUSI partners with civil society organisations as they work to empower marginalised people to participate in, and benefit from, decisions that affect them. Specifically, INKLUSI is focused on support for the following 4 priority areas:



### Improved Access to Services

Access to public services is critical to reducing poverty, improving livelihoods for marginalised women and to facilitate broader economic growth. INKLUSI partners help bridge the gap in access through a range of strategies and innovations. **By establishing community-based groups**, partners directly assist women, handle complaints, and refer them to government and other service providers. Through collecting and analysing data on marginalised communities, INKLUSI partners strengthen their advocacy to government to realise their rights to access services for: **legal identity documentation; social protection including health insurance; sexual, maternal and reproductive health; protection from violence; adolescent health; and safe migration services.**



### Protection from Violence

Protecting women and children from violence significantly improves intergenerational education, health and employment outcomes, contributing to gender equality and inclusive and sustainable economic growth. INKLUSI works to prevent violence and increase access to government-funded integrated case-handling service centres. Partner initiatives address social norms around victimisation and aim to provide better responses and connection of services in instances of violence. Partners also advocate for the elimination of child marriage through the implementation of national and subnational regulations, strategies and public awareness campaigns with government.



### Economic Resilience and Livelihoods

The COVID-19 pandemic highlighted the critical importance of strengthening local markets and small-scale enterprises for long-term, resilient growth. INKLUSI partners are **establishing community-based economic groups** which develop small-scale-businesses, cooperatives, savings and loans groups, and barter markets. **These initiatives are attracting support from local government in the form of equipment, materials, training and funding.** Through membership in community-groups, partners can also facilitate member linkages to government services and programs for fair and safe employment opportunities, and access to COVID-19 recovery programs for marginalised people, in particular people with disability.

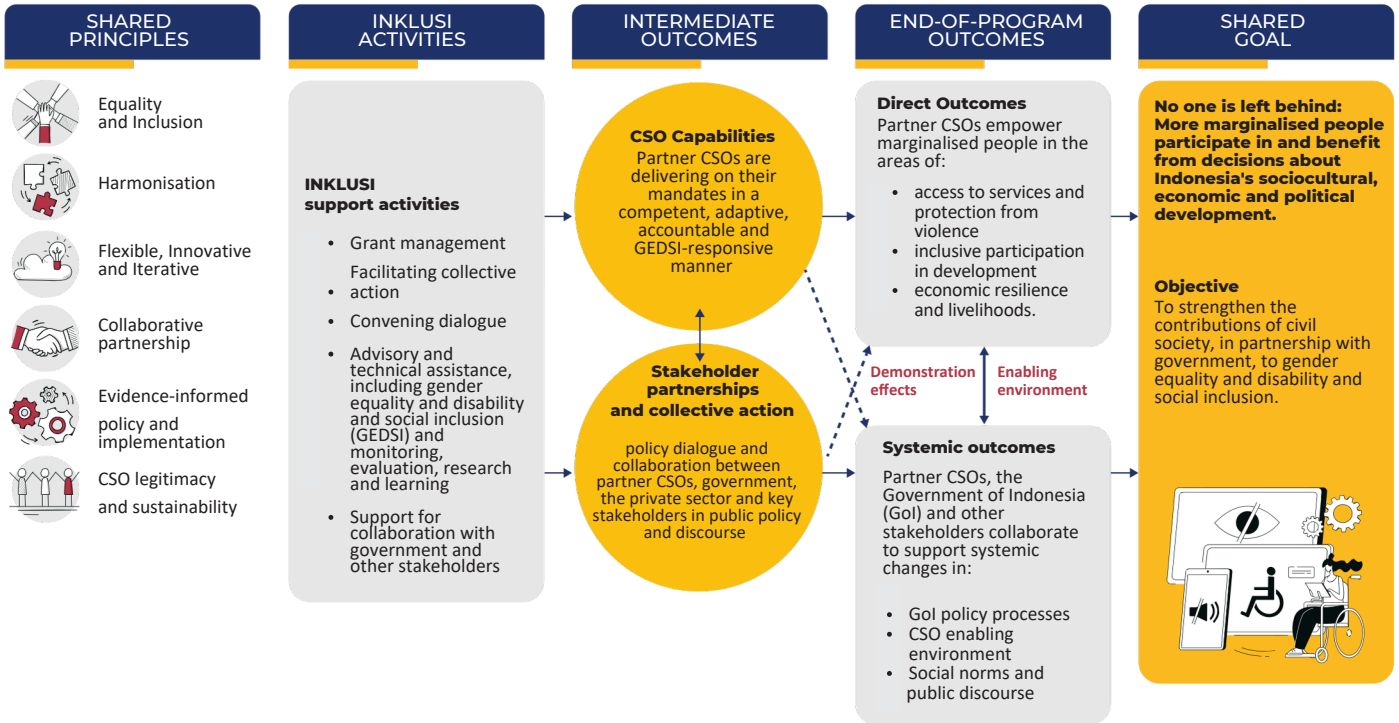


### Inclusive Participation in Development

Inclusive participation and contribution to the development process is central to sustainable growth. INKLUSI partners build the capacity of marginalised people in political empowerment and facilitate their participation in public decision-making forums. **Through the formation of constituent groups**, partners provide community education, develop leadership skills, and facilitate dialogue between parliamentarians and their constituents. By empowering marginalised communities with knowledge of their rights to participate in decision-making, and increasing community awareness of gender equality, disability and social inclusion issues, partners raise the voice and influence of marginalised people in national and sub-national planning, budgeting, and program implementation.

## INKLUSI'S GOAL OF LEAVING NO-ONE BEHIND

INKLUSI's overarching goal is to ensure no-one is left behind as marginalised people participate in, and benefit from, decisions about Indonesia's development. Underpinning this goal is strengthened contributions of civil society, in partnership with government, to gender equality, disability and social inclusion for marginalised people.



## STRENGTHENING LOCAL TO NATIONAL ADVOCACY

INKLUSI strengthens our civil society organisation partners, and their local partners and networks ability to inform decision-making from the grassroots to the national level. Civil society organisations play a vital role in reaching marginalised groups and understanding barriers to inclusion. Through flexible grants, INKLUSI's civil society organisation partners undertake the following:



INKLUSI's partners bring their extensive experience and knowledge to inform collective action and advocacy at the national level. With INKLUSI's support, they are convening strategic and national dialogue, and collaborating with government, parliament, business and the private sector. INKLUSI builds the capacity of partners through access to expertise in the areas of gender equality, disability and social inclusion, grants management, monitoring and evaluation, advocacy, communications and social change campaigns, economic empowerment and sustainability.

## INKLUSI PARTNERS ARE SUPPORTING NATIONAL AND SUBNATIONAL POLICY

- ▶ Partners convened the **National Women's Development Consultation** to enhance gender equality, disability and social inclusion considerations in national planning (RPJPN) in collaboration with Bappenas and the Ministry of Women's Empowerment and Child Protection
- ▶ **Migrant Care** has supported national and international policy change to increase access of migrant workers to social assistance, including through the ASEAN Forum
- ▶ **BaKTI's Inclusive Schools (*Sekolah Inklusif*)** pilot launched in collaboration with the Kendari district government to improve access to education for children with disability.
- ▶ **SIGAB** has been supporting the formation of disability services units in 2 provinces and 8 districts/cities.
- ▶ **KAPAL Perempuan, BaKTI and SIGAB** have collectively been supporting 55 villages to adopt inclusive village initiatives, and to implement the 2016 Law concerning Persons with Disabilities.

## INKLUSI PARTNERS

### Implementing partners



### Research partners



NO-ONE IS LEFT BEHIND  
*Tidak Ada Satupun yang Tertinggal*

**INKLUSI**  
Australia - Indonesia Partnership  
Towards an Inclusive Society

The Australia-Indonesia Partnership Towards an Inclusive Society, or INKLUSI, is working to increase the participation of marginalised groups in, and their benefit from, Indonesia's socio-cultural, economic and political development. INKLUSI works with government and civil society partners to advance their work in gender equality, the rights of persons with disabilities and social inclusion. INKLUSI supports the Government of Indonesia's agenda for inclusion, including through national development plans and the Sustainable Development Goals. INKLUSI is an 8-year (2021-2029) bilateral Australian and Indonesian Government program with a budget of up to AUD 120 million. It is partnering with 11 Indonesian civil society organisations, 8 research partner institutions and their networks across 33 provinces, >120 district/cities, >800 villages in Indonesia.

CONTACT

✉ [info@inklusi.or.id](mailto:info@inklusi.or.id)

🌐 [www.inklusi.or.id](http://www.inklusi.or.id)

